



VITA MUNICIPAL COUNCIL, VITA



ULB CODE: 802893



Thematic Area 1

Bhumi / Earth

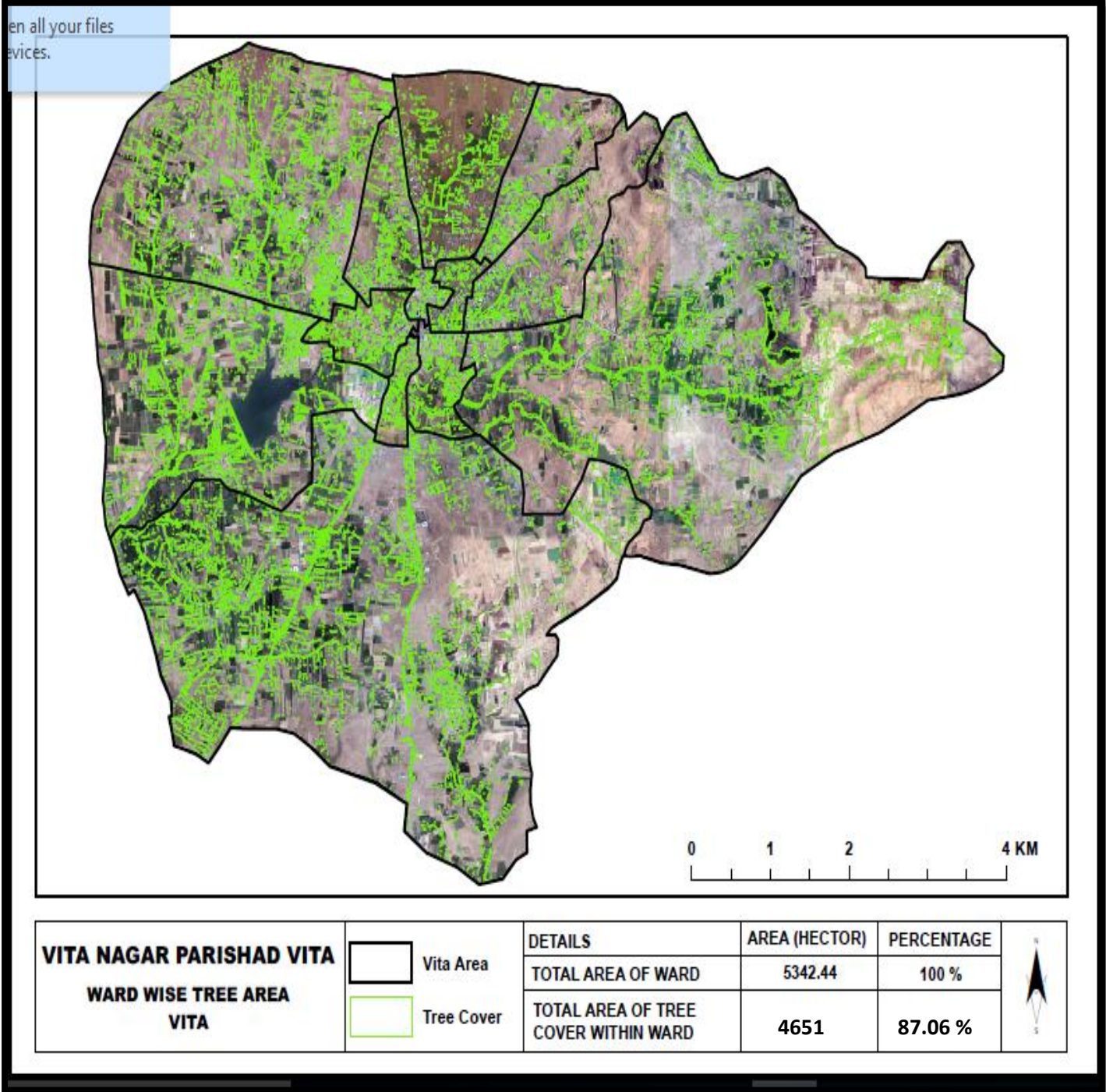


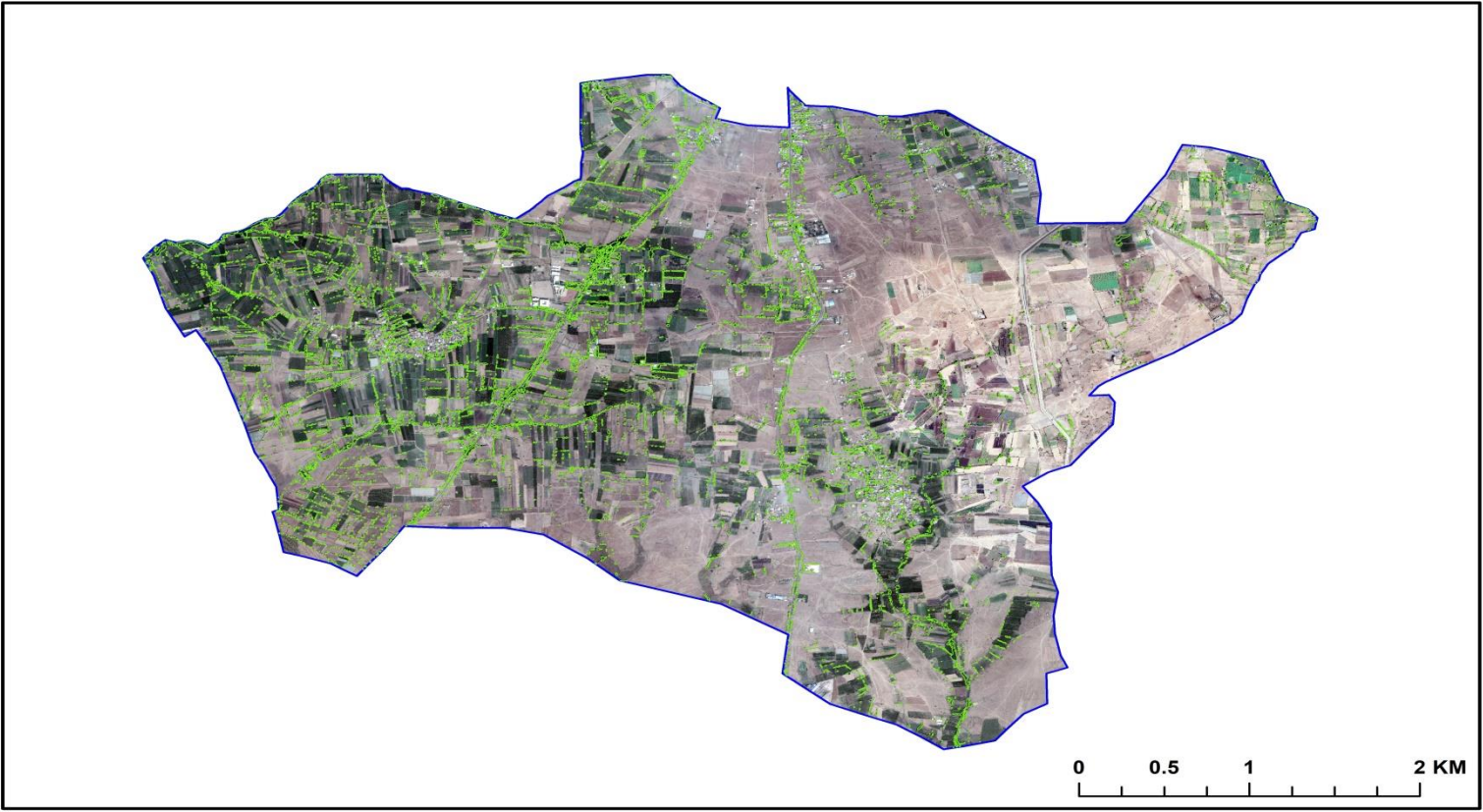
भूमी

Submitted by-

VITA MUNICIPAL COUNCIL, VITA

Existing tree cover of each ward



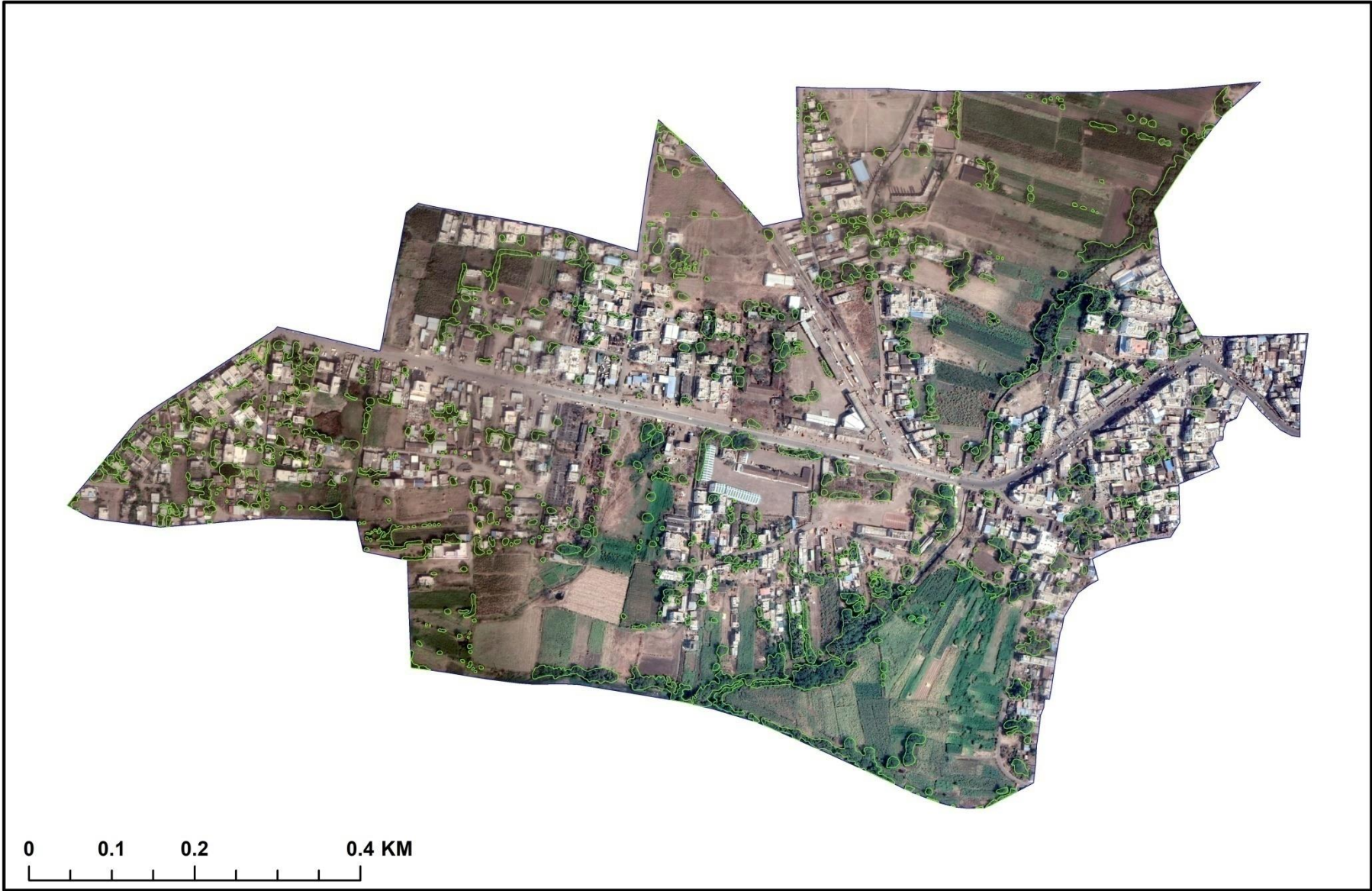


VITA NAGAR PARISHAD VITA WARD WISE TREE AREA WARD NO 12	<div><div></div> Tree Cover</div> <div><div></div> Ward Boundry</div>	DETAILS	AREA (HECTOR)	PERCENTAGE	
		TOTAL AREA OF WARD	1661.37	100 %	
		TOTAL AREA OF TREE COVER WITHIN WARD	160	9.63	

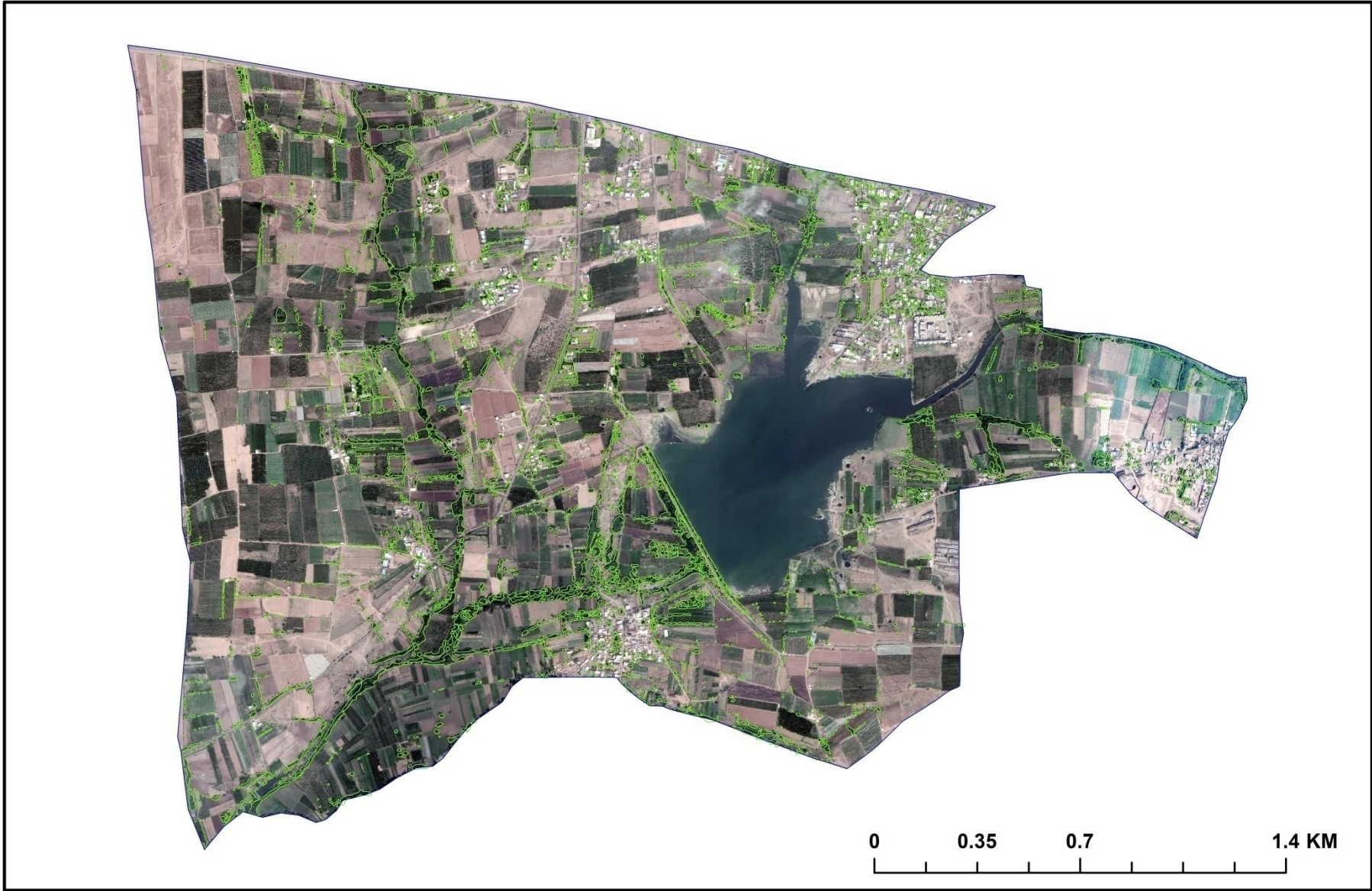
VITA NAGARPARISHAD VITA
WARD WISE TREE COVER AREA
WARD 11



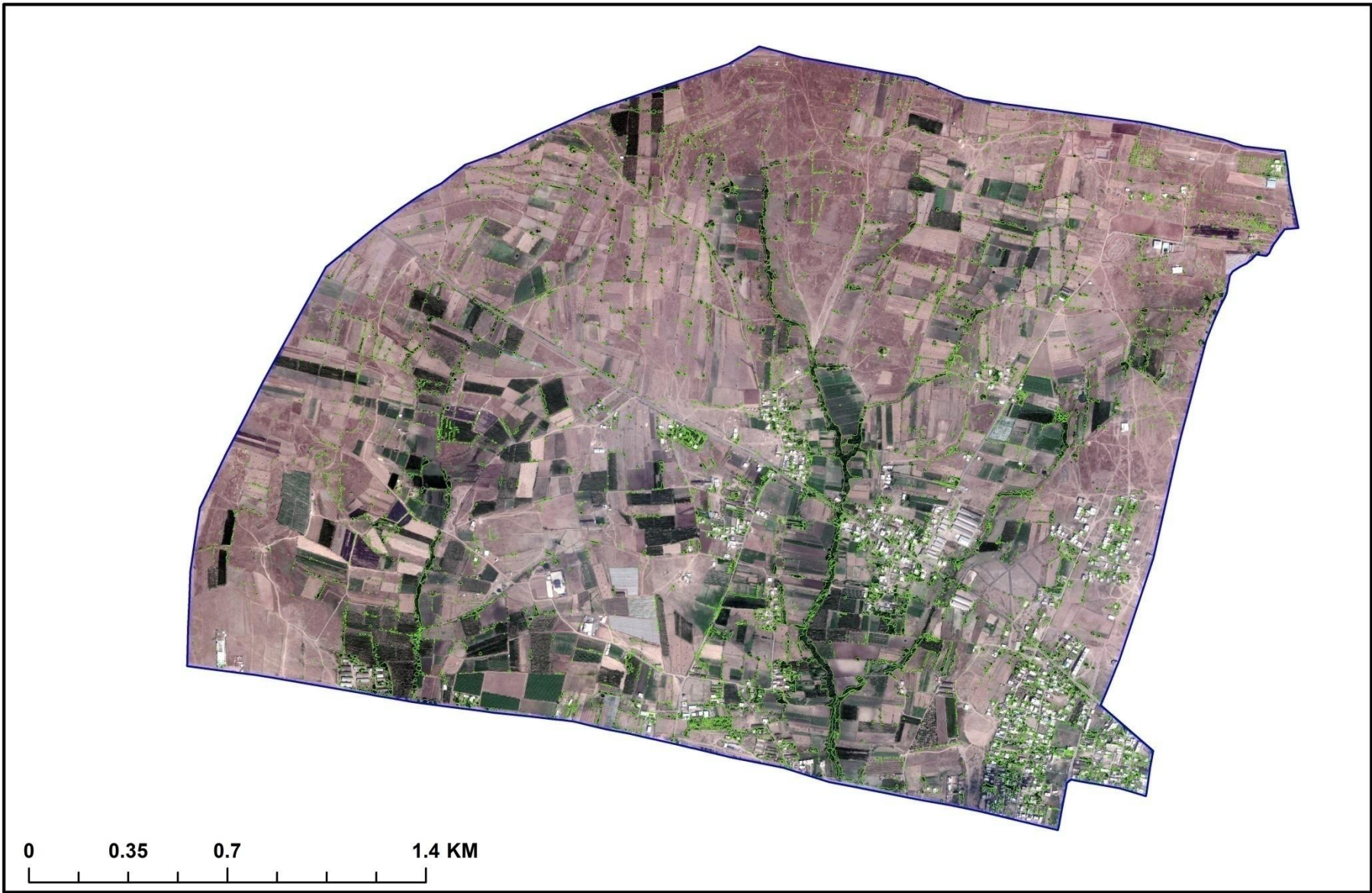
Legend	DETAILS	AREA (HECTOR)	PERCENTAGE
	TOTAL AREA OF WARD	31.51	100 %
	TOTAL AREA OF TREE COVER WITHIN WARD	8.15	25.86 %



VITA NAGAR PARISHAD VITA WARD WISE TREE AREA WARD NO 10	Legend <div><div></div> Tree Cover</div> <div><div></div> Ward Boundry</div>	DETAILS	AREA (HECTOR)	PERCENTAGE
		TOTAL AREA OF WARD	68.02	100 %
		TOTAL AREA OF TREE COVER WITHIN WARD	12.3	18.08 %



VITA NAGAR PARISHAD VITA WARD WISE TREE AREA WARD NO 09	<div><div></div>Ward Area</div> <div><div></div>Tree Cover</div>	DETAILS	AREA (HECTOR)	PERCENTAGE	
		TOTAL AREA OF WARD	598.01	100 %	
		TOTAL AREA OF TREE COVER WITHIN WARD	90.45	15.13 %	



VITA NAGAR PARISHAD VITA WARD WISE TREE AREA WARD NO 08	<div>Ward Area</div> <div>Tree Cover</div>	DETAILS	AREA (HECTOR)	PERCENTAGE	
		TOTAL AREA OF WARD	697.86	100 %	
		TOTAL AREA OF TREE COVER WITHIN WARD	95.3	13.66 %	

VITA NAGARPARISHAD VITA
WARD WISE TREE COVER AREA
WARD 07



Legend	DETAILS	AREA (HECTOR)	PERCENTAGE
	TOTAL AREA OF WARD	124.34	100 %
	TOTAL AREA OF TREE COVER WITHIN WARD	40.3	32.41 %

Ward Boundry

Tree Cover

VITA NAGARPARISHAD VITA

WARD WISE TREE COVER AREA

WARD 06

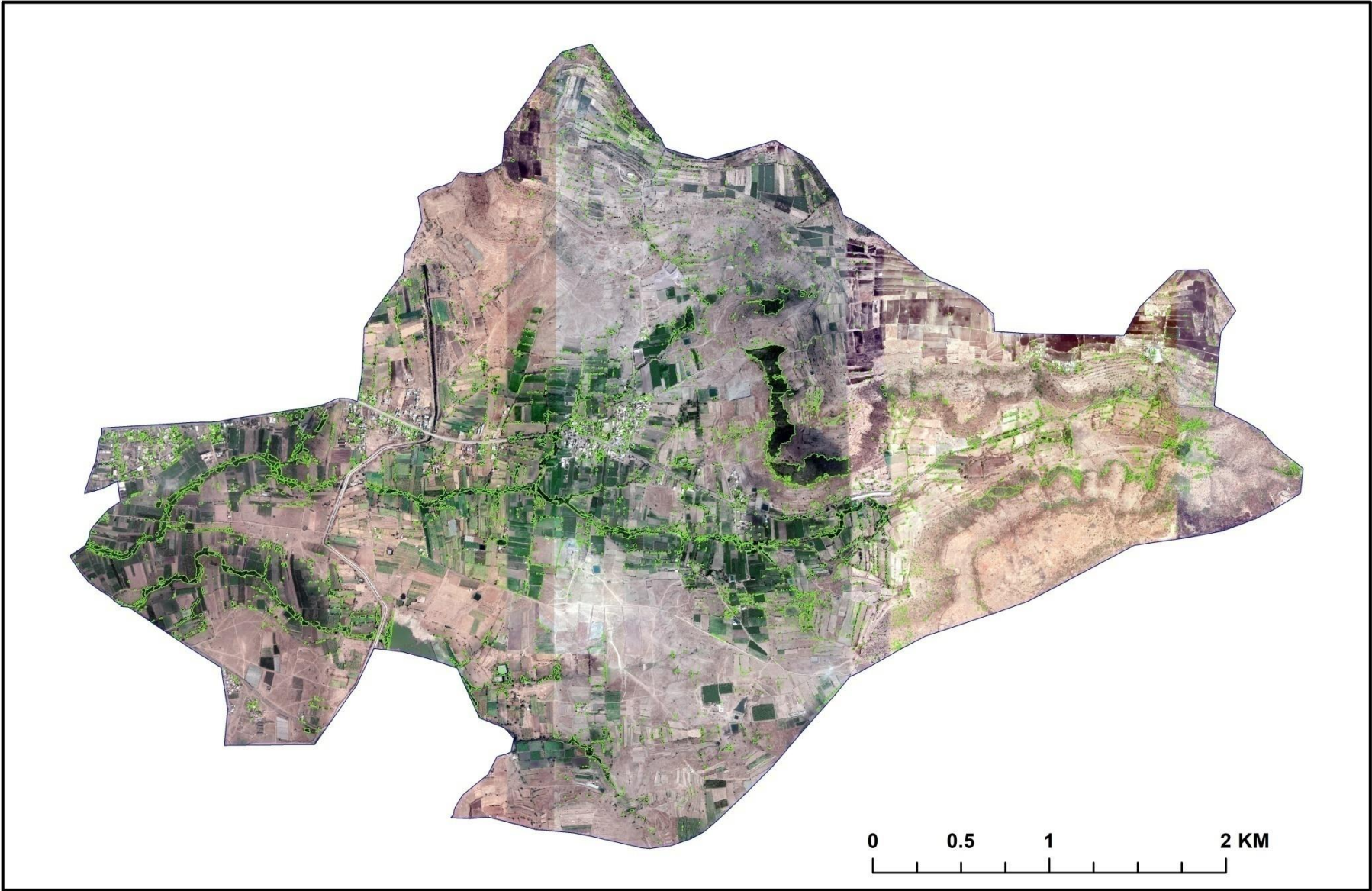


<div>Legend</div> <div> <div>Ward 06</div> <div>Tree Cover</div> </div>	DETAILS	AREA (HECTOR)	PERCENTAGE
	TOTAL AREA OF WARD	30.93	100 %
	TOTAL AREA OF TREE COVER WITHIN WARD	9.3	30.07 %

VITA NAGARPARISHAD VITA
WARD WISE TREE COVER AREA
WARD 05

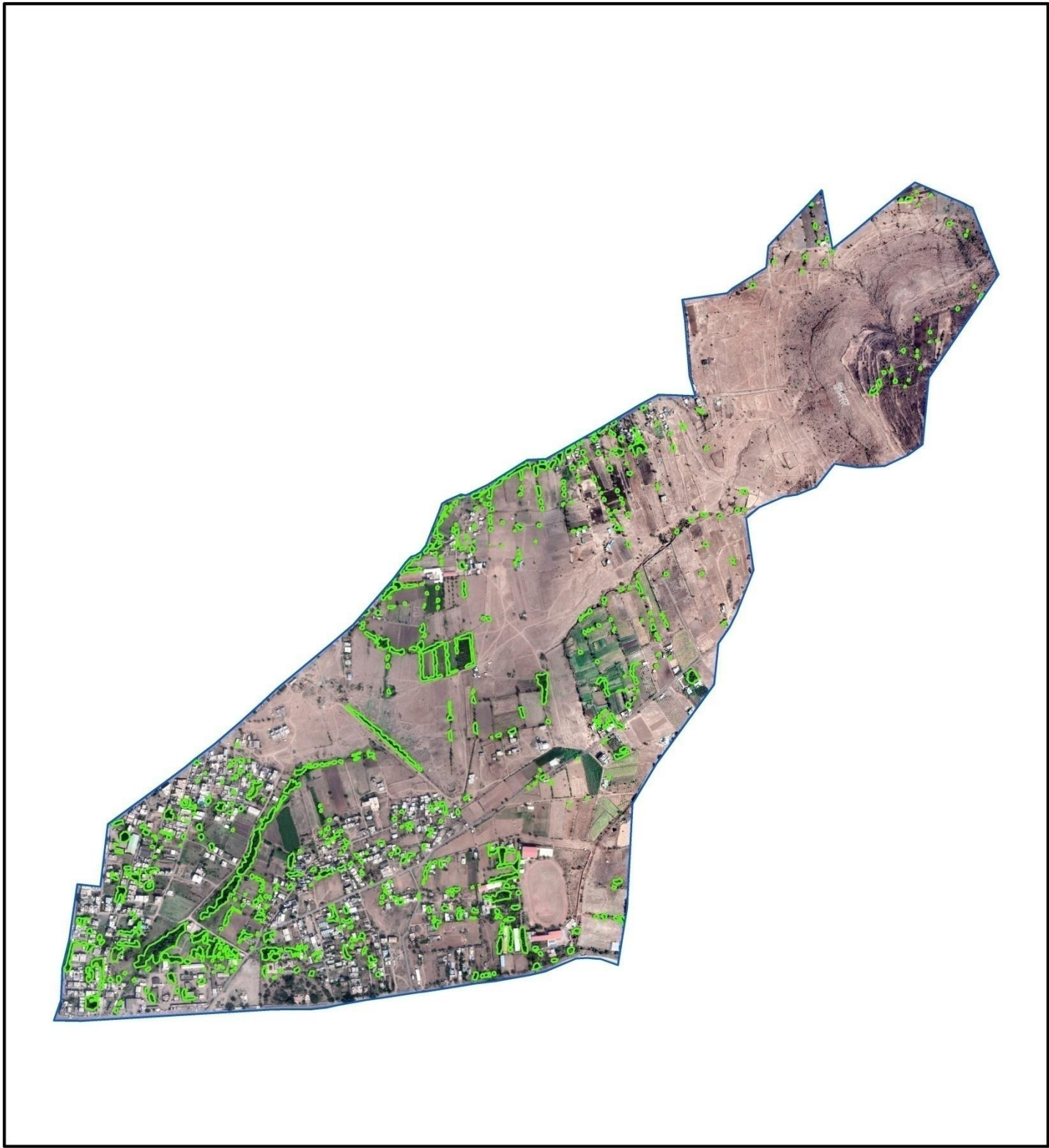


Legend	DETAILS	AREA (HECTOR)	PERCENTAGE
	TOTAL AREA OF WARD	67.05	100 %
	TOTAL AREA OF TREE COVER WITHIN WARD	20.4	30.43 %



VITA NAGAR PARISHAD VITA WARD WISE TREE AREA WARD NO 04	<div>Ward Boundry</div> <div>Tree Cover</div>	DETAILS	AREA (HECTOR)	PERCENTAGE	
		TOTAL AREA OF WARD	1500	100 %	
		TOTAL AREA OF TREE COVER WITHIN WARD	90.2	6.01 %	

VITA NAGARPARISHAD VITA
WARD WISE TREE COVER AREA
WARD 03



Legend	DETAILS	AREA (HECTOR)	PERCENTAGE
<div>Ward Boundry</div> <div>Tree Cover</div>	TOTAL AREA OF WARD	204.31	100 %
	TOTAL AREA OF TREE COVER WITHIN WARD	60.3	29.51 %

VITA NAGARPARISHAD VITA
WARD WISE TREE COVER AREA
WARD 02



Legend	DETAILS	AREA (HECTOR)	PERCENTAGE
	TOTAL AREA OF WARD	133.58	100 %
	TOTAL AREA OF TREE COVER WITHIN WARD	35.85	26.84 %

VITA NAGARPARISHAD VITA
WARD WISE TREE COVER AREA
WARD 01



Legend	DETAILS	AREA (HECTOR)	PERCENTAGE
	TOTAL AREA OF WARD	225.16	100 %
	TOTAL AREA OF TREE COVER WITHIN WARD	50.5	22.43 %

vita municipal council vita												
Tree plan to achieve 33% green area												
ward no	ward area in hect	existing green cover	percentage of green cover	33% green cover	required area for green cover	no of trees required in total	available space for plantaion	year wise distribution				
								1	2	3	4	5
1	225.16	50.5	22.43	74.30	23.80	3030	salshinge road, gardi road internal roads of ward	606	1646	1646	1646	1646
2	133.58	35.85	26.84	44.08	8.23	1048	lengare road, internal roads and house holds	210	984	984	984	984
3	204.31	60.3	29.51	67.42	7.12	907	Pazar talav, lendhur odha side, internal roads and house holds	181	1493	1493	1493	1493
4	1500	90.2	6.01	495.00	404.80	51534	sulkai hill, internal roads and house holds	10307	10970	10970	10970	10970
5	67.05	20.4	30.43	22.13	1.73	220	pare road, internal roads and house holds	44	401	401	401	401
6	30.93	9.3	30.07	10.21	0.91	115	internal roads and house holds	23	166	166	166	166
7	124.34	40.3	32.41	41.03	0.73	93	mayani road, school ground, nevari road, internal roads and house holds	19	860	860	860	860
8	697.86	95.3	13.66	230.29	134.99	17186	mayani road, in farms , internal roads and house holds	3437	5052	5052	5052	5052

9	598.01	90.45	15.13	197.34	106.89	13608	around vivekanand nagar talav, internal roads and house holds	2722	4106	4106	4106	4106
10	68.02	12.3	18.08	22.45	10.15	1292	internal roads and house holds	258	599	599	599	599
11	31.51	8.15	25.86	10.40	2.25	286	shivsangam odha side, internal roads and house holds	57	184	184	184	184
12	1661.37	160	9.63	548.25	388.25	49427	internal roads and house holds	9885	12487	12487	12487	12487
total no of tree required						137474		27495	38948	38948	38948	38948

note- area of conopy of trees is considered as 5 m radius

area of each tree canopy 0.007855 hect



[Handwritten Signature]

Chief Officer
Vita Municipal Council